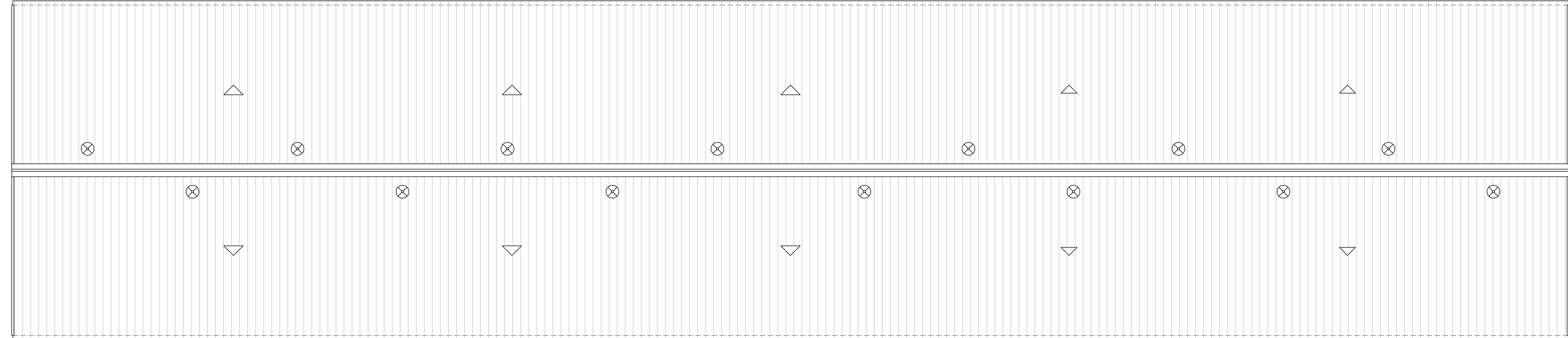
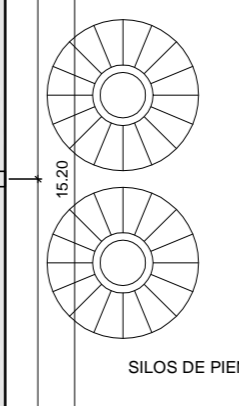
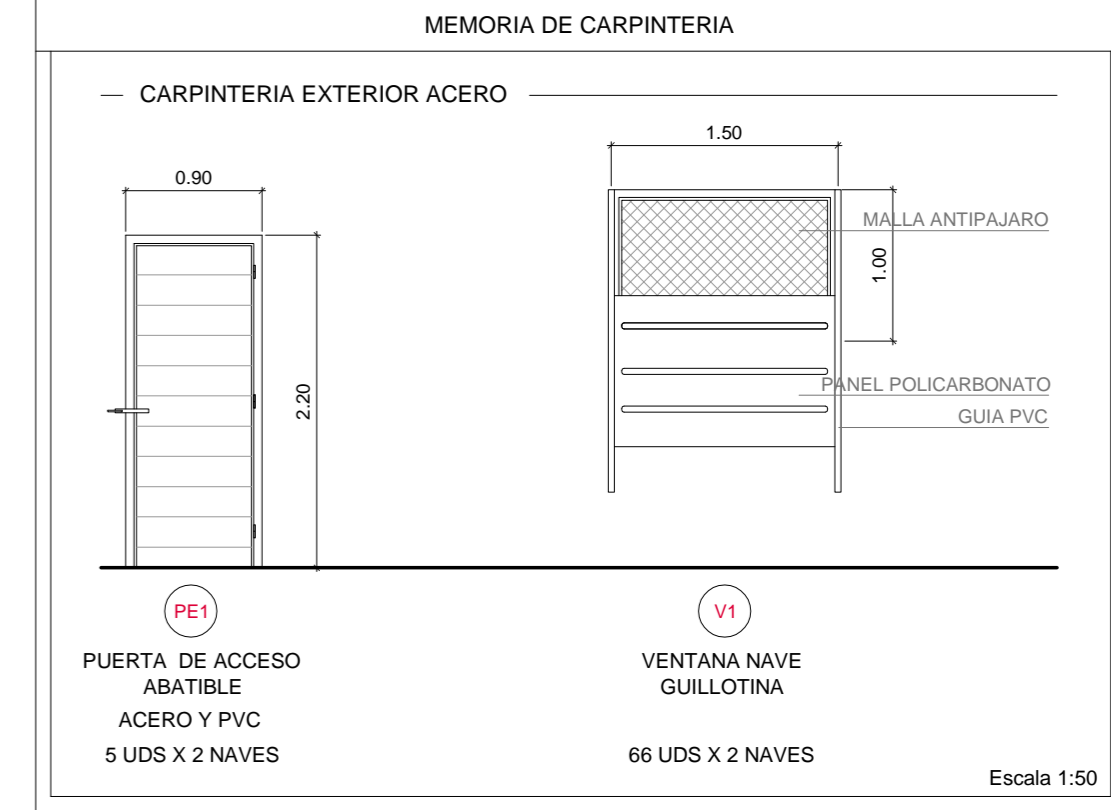


Planta Naves 01 y 02 de la Explotación  
COTAS Y SUPERFICIES

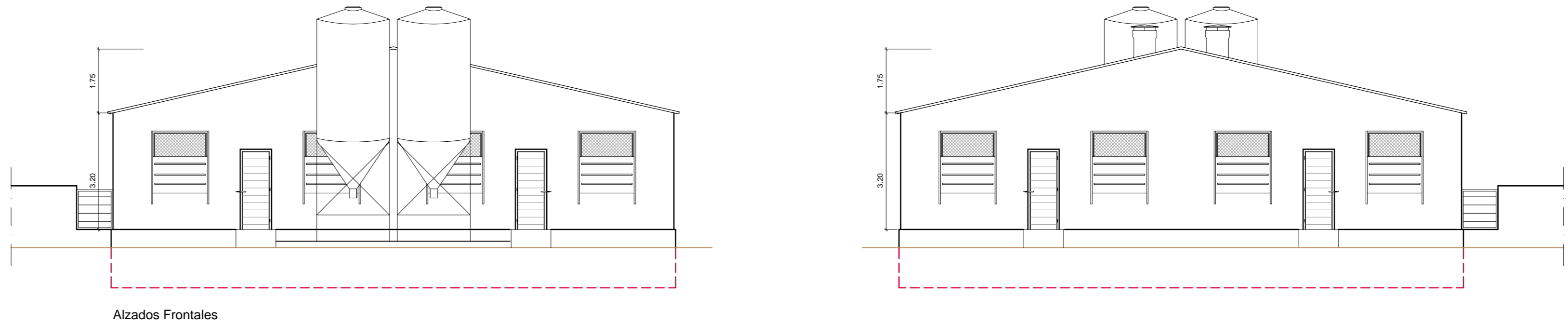
| ESTUDIO DE CAPACIDAD |          |                            |                       |                      |                  |                   |        |
|----------------------|----------|----------------------------|-----------------------|----------------------|------------------|-------------------|--------|
| PLANTA               | USO      | m <sup>2</sup> /Plaza      | Sup. Bruta Corralinas | Sup. Neta Corralinas | PLAZAS CORRALINA | NUMERO CORRALINAS | PLAZAS |
| NAVE 01              | CEBO     | 0,65 m <sup>2</sup> /plaza | 10,24 m <sup>2</sup>  | 9,92 m <sup>2</sup>  | 15               | 16                | 240    |
|                      | CEBO     | 0,65 m <sup>2</sup> /plaza | 9,60 m <sup>2</sup>   | 9,28 m <sup>2</sup>  | 14               | 72                | 1.008  |
|                      | LAZARETO |                            | 12,25 m <sup>2</sup>  | 11,93 m <sup>2</sup> | --               | 1                 | --     |
|                      | LAZARETO |                            | 7,20 m <sup>2</sup>   | 6,88 m <sup>2</sup>  | --               | 3                 | --     |
| TOTAL NAVE 01        |          |                            |                       |                      |                  | 92                | 1.248  |
| NAVE 02              | CEBO     | 0,65 m <sup>2</sup> /plaza | 10,24 m <sup>2</sup>  | 9,92 m <sup>2</sup>  | 15               | 16                | 240    |
|                      | CEBO     | 0,65 m <sup>2</sup> /plaza | 9,60 m <sup>2</sup>   | 9,28 m <sup>2</sup>  | 14               | 72                | 1.008  |
|                      | LAZARETO |                            | 12,25 m <sup>2</sup>  | 11,93 m <sup>2</sup> | --               | 1                 | --     |
|                      | LAZARETO |                            | 7,20 m <sup>2</sup>   | 6,88 m <sup>2</sup>  | --               | 3                 | --     |
| TOTAL NAVE 02        |          |                            |                       |                      |                  | 92                | 1.248  |
| TOTAL GENERAL        |          |                            |                       |                      |                  | 184               | 2.496  |



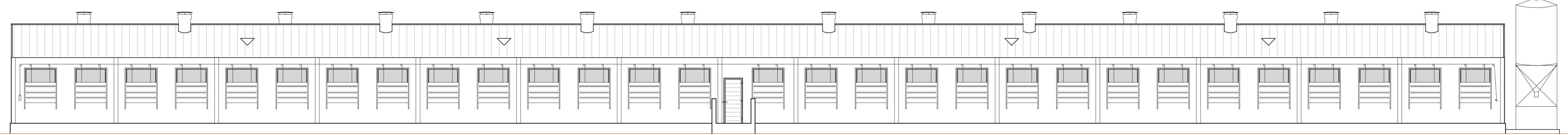
Cubiertas Naves 01 y 02



| SUPERFICIES   |                         |                         |
|---------------|-------------------------|-------------------------|
| PLANTA        | UTIL                    | CONSTRUIDA              |
| NAVE 01       | 1.084,50 m <sup>2</sup> | 1.119,58 m <sup>2</sup> |
| NAVE 02       | 1.084,50 m <sup>2</sup> | 1.119,58 m <sup>2</sup> |
| TOTAL GENERAL | 2.169,00 m <sup>2</sup> | 2.239,16 m <sup>2</sup> |



Alzados Frontales



Alzados Laterales